

# STAX

**SIMPLE.**

**SELLABLE.**

**SUPPORTED.**



# STAX

**SIMPLE. SELLABLE. SUPPORTED.**

The concept of modular LED display architecture is not revolutionary. At NEXT, we've been keeping a close eye on the functionality and reliability of such solutions for the better part of a decade. After extensive testing of SMD brightness, the visual integrity of installed displays and proven deployment of a reliable control system, we're proud to offer sign companies and sign owners a dependable alternative to the traditional EMC.



## • MODULAR DESIGN

The unique modular design allows sign companies to quickly and easily assemble a high-definition digital display supported by a **RIGID FRAME** and optional **AESTHETIC BACK PANELS**.

## • SOLID STATE

Constructed with no moving parts. Every display features sealed modules, automotive-grade cabling and an advanced control system. **STAX™ IS A RUGGED DISPLAY** requiring no cooling elements or ventilation. This cutting-edge technology is designed to withstand: heat, wind, cold, humidity, salt and any other environmental enemy of traditional digital signage.

## • PLUG-N-PLAY

Designed for plug-n-play installation. Connect an assembled STAX™ display to power and it automatically comes online via an internal cellular router. The all-environment PC allows for remote display configuration and verification by NEXT technicians.

## • LIFETIME CELLULAR

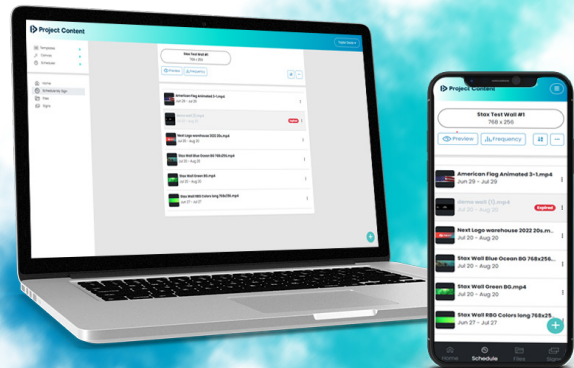
No more wi-fi/wireless devices. **SAVE TIME, MONEY, AND HASSLE** on every install. We take care of all data service charges for the lifetime of the display.

## • HIGH RESOLUTION

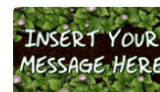
STAX™ Modules feature **9.5mm SMD** and **6mm SMD** resolution. Amazing display clarity perfect for nearly every commercial application. And at 9,000+ NITS brightness, you can be sure that STAX™ outshines the sun for years.

## Project Content

Control your STAX™ Display from anywhere, on any device with the industry's best cloud software. Project Content is mobile friendly and comes loaded with professionally designed, **EDITABLE TEMPLATES** specifically made for EMCs.



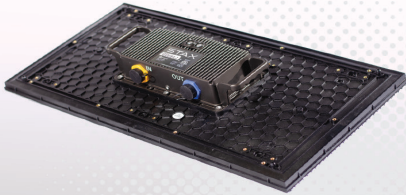
**NEXTLEDSIGNS.COM**  
**833-474-STAX**





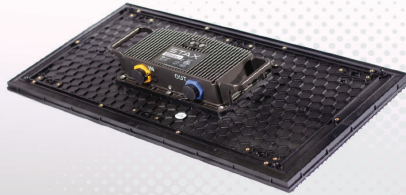
## SYSTEM **HARDWARE** COMPONENTS

**9.5MM**



**1' x 2' 9.5MM STAX LED  
DISPLAY MODULE - 1024 px/sqft**

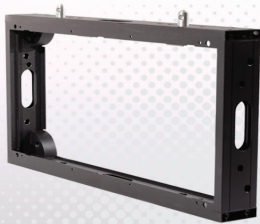
**6MM**



**1' x 2' 6MM STAX LED  
DISPLAY MODULE - 2304 px/sqft**



**STAX LED DISPLAY  
PC CONTROLLER**



**1' x 2' STAX LED  
DISPLAY FRAME**



**2' x 4' STAX LED  
DISPLAY FRAME**



**STAX CONTROLLER  
CABLE KIT**



**STAX BOOST POWER  
CONTINUATION CABLE**

**OPTIONAL**



**1' x 2' and 2' x 4' STAX LED  
DISPLAY FRAME DOOR**

**OPTIONAL**



**PC CONTROLLER MOUNTING  
PLATE W/ SLIDES**

# LIFETIME SUPPORT & SERVICE

The NEXT service philosophy permeates every fiber of our company. Be **AVAILABLE**. Be **QUICK**. Be **RESPONSIVE**. Be **EMPATHETIC**. It's central to our delivery of STAX™ that we provide an elevated level of support for sign companies and the sign owners that count on them.

Our technicians will be on call for assembly, configuration, installation, testing and final connections. After installation, you've got nothing to worry about. We handle software training, account support, trouble shooting, and often re-training the sign owner. It's our goal to provide every level of support possible to maximize the return on investment a STAX™ display can deliver.



**NEXTTOOLBOX.COM**  
LITERATURE | WIRING SCHEMATICS  
VIDEOS | SIGN GALLERY



SPECIFICATION CHART		9.5MM	6MM
PHYSICAL PARAMETERS	PIXEL CONFIGURATION	3-in-1 SMD	3-in-1 SMD
	PIXEL PITCH (MM)	9.525	6.35
ELECTRONIC PARAMETERS	PIXEL MATRIX PER PANEL	32 x 64	48 x 96
	SIZE (INCHES)	12 x 24	
	FRAME DEPTH (FRAME ONLY)	2.75"	
	FRAME DEPTH (W/ MODULE)	3.625"	
	MODULE AND FRAME WEIGHT (LBS)	13	
	FRAME MATERIAL	ALUMINUM / POWDERCOAT	
OPTICAL PARAMETERS	COLOR GRAYSCALE (BIT)	16	
	REFRESH RATE (HZ)	3840	
	FRAME FREQUENCY (HZ)	50/60	
	BRIGHTNESS (NIT)	9500+	9000+
	COLOR TEMPERATURE (K)	3200 - 9000	3200 - 9000
ELECTRICAL PARAMETERS	CONTRAST RATIO	4000:1	4000:1
	HORIZONTAL VIEWING ANGLE (DEG)	160°	160°
	VERTICAL VIEWING ANGLE (DEG)	70°	70°
ENVIRONMENTAL PARAMETERS	AC INPUT VOLTAGE (V)	100~240	100~240
	AC INPUT FREQUENCY (HZ)	50/60	50/60
	MAX / AVG POWER PER MODULE (AMPS)	1.25 / .46	1.35 / .66
PRODUCT INSTALL	STORAGE TEMPERATURE (F)	-40° - 180°	
	OPERATING TEMPERATURE (F)	-20° - 180°	
	STORAGE HUMIDITY (%)	10% ~ 90%	
	WORKING HUMIDITY (%)	10% ~ 90%	
	TYPICAL LIFE (HRS)	100,000	
	IP RATING	IP67/IP67	
	PANEL INSTALLATION METHOD	FIXED INSTALLATION	
	STANDARD LIFTING CAPACITY	20 MODULES + FRAME PER LIFTING POINT	